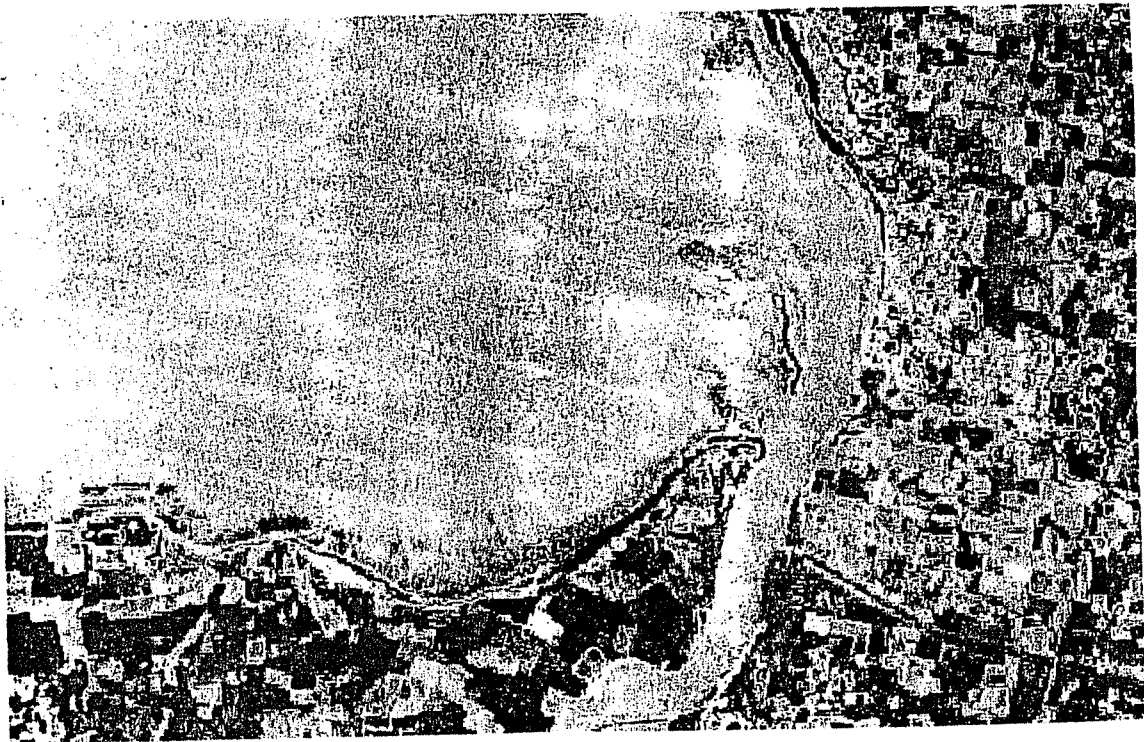


Cancer Mortality and Proximity to Hinkley Point
Nuclear Power Station in Somerset, 1995-1998.

Part 1
Breast Cancer

Chris Busby PhD
Paul Dorfman, BSc
Helen Rowe BA



Occasional Paper 2000/2
Green Audit: Aberystwyth
April 2000



1. Introduction and Background

Since the discovery of the Sellafield leukemia cluster in 1983 there has been significant debate around the question of childhood cancer clusters near nuclear sites in the UK and elsewhere (Beral *et al.*, 1993). In the last fifteen years, such clusters have been confirmed in the vicinity of all three nuclear reprocessing plants, Sellafield, Dounreay and La Hague with Relative Risks in the 0-4 age group ranging from 8 to 15. In addition, child leukemia incidence clusters have been confirmed at the Atomic Weapons Establishment (AWE) at Aldermaston and Burghfield in West Berkshire. In 1997 we examined childhood leukemia mortality in South Oxfordshire and showed that there was a significant excess risk only in those County Districts which contained nuclear sites, namely South Oxfordshire (Atomic Energy Research Establishment, Harwell) and Newbury (AWE Aldermaston and Burghfield) (Busby and Scott Cato, 1997). Excess leukemia risk has also been reported near nuclear power stations in the UK (Cook Mozzafari *et al.*, 1989) in Germany (Hoffmann *et al.*, 1998) and in Sweden (Andersen and Moeller, 1997).

Although the existence of these clusters is no longer disputed, the cause of the effect has been the subject of considerable argument. Official bodies, like the Committee on Medical Aspects of Radiation in the Environment (COMARE), set up at the time of the enquiry into the Sellafield child leukemia cluster, continue to argue that the doses likely to be received by the children are too small, on the basis of the risk models presently used to underpin legal restraints on radiation exposure. On the other hand, an increasingly large body of opinion holds that the risk models used by COMARE and others, which are based on the cancer yield in survivors of the Hiroshima bomb, cannot safely be used to predict or explain cancers caused by chronic internal irradiation from ingested or incorporated radionuclides like Strontium-90, Plutonium-239, Caesium-137 and so forth. These and other man-made radioactive isotopes have not existed on earth prior to 1945 and the combination of their ability to substitute for biologically important elements and then irradiate local tissue in novel ways makes them a potentially serious mutagenic hazard whose magnitude is not informed by studies of external acute exposure, like the Hiroshima study. (Nussbaum and Koehnlein 1994, Busby 1995, 1998, 2000).

All the nuclear sites where childhood leukemia and cancer clusters have been discovered have in common that they routinely discharge significant quantities of these man-made radioisotopes to the air, river or sea under licenses provided by the government. These licenses assume that the levels of exposure are too low to be of radiological significance. The existence of the leukemia and cancer clusters suggests otherwise.

In 1988, Somerset Health Authority conducted a study of leukemia in parishes inside a radius of 15km from Hinkley Point, using data provided by the local large hospital, Musgrove Park (Bowie and Ewings, 1989). The study looked at data from 1959-1986 and concluded that following the commissioning and operation of the Hinkley 'A' station in 1964 there was a significant increase in the rates of leukemia and non-Hodgkin lymphoma among under 25 year-olds living inside a 12.5km radius of Hinkley Point. A statistically significant Relative Risk of 2 to 2.5 times the National average was driven by cases in the 5-year period following the operation of the plant. This seemed to support the conclusion that, like Sellafield and Dounreay, it was the latter that was somehow causing it. Thus there is some prior evidence to suggest that the operation of Hinkley Point may have caused increases in leukemia in its vicinity.

It is now universally believed that ionizing radiation causes leukemia and also cancer through its properties as a general mutagen: it causes mutations in cellular genes. Although leukemia has been the outcome most associated with exposure, all other cancers are caused

by ionizing radiation (BEIR V), and indeed, the Seascale child leukemia excess was also accompanied by a more modest, though significant, cancer excess. Between 1998 and 2000, our group has studied both leukemia and cancer incidence in small areas of Wales using data provided by Wales Cancer Registry for the period of peak discharge from Sellafield, 1974-1989. This work was funded by the government of the Irish Republic and addressed the question of the possible effects on cancer risk produced by discharges of man-made radioactive isotopes to the Irish Sea by BNFL, Sellafield. What we were able to show was that there was a profound, and statistically significant excess risk of leukemia and most other cancers in both adults and children living in areas whose population centroids averaged less than 800m from the Irish sea. The effect was particularly significant for female breast cancer (Busby *et al.*, 2000a).

The overall risk was driven by cases in those seaside towns on the north Wales coast located near large areas of intertidal sediment and mud which were known to contain radioactive material from Sellafield. Examples were Bangor, Llandudno, Conwy, Prestatyn, Colwyn Bay, Rhyl and Abergele. The effect also occurred near the mudflats of the Dee estuary in town of Flint and Holywell. Owing to tidal energy conditions there, the coast has accumulated radioactive mud and silt contaminated by discharges from Sellafield.

Prior to this study, in May 1996, we had attempted to examine cancer risk in small areas around Hinkley Point and we approached Dr Pheby of the Bristol Cancer Registry for data. The letter was referred to Dr Jenifer Smith, the director of a new, Cancer Intelligence Unit based in Winchester. Dr Smith refused to release the small area data on the basis that it was confidential. This was the first in a series of refusals to release data for small areas near nuclear sites. Since our acquisition of the Wales Cancer Registry data in 1995, and 1996, we have applied for and have been refused small area incidence data by all of the regional cancer registries we have written to including the Oxford Cancer Intelligence Unit (Harwell, Aldermaston) and South and West (Hinkley, Channel Islands) and the new Wales Cancer Intelligence and Surveillance Unit which had replaced the old Wales Cancer Registry from whom we obtained our original figures. Further independent examination of areas near nuclear sites remained impossible until the recent release by the new Office for National Statistics, in late 1999, of census ward level mortality data for selected causes of death for the four-year period 1995-1998. We purchased this data from ONS in November 1999 and began looking at cancer risk in adults in wards around Harwell in Oxfordshire and Aldermaston in Berkshire. These results will be published in due course.

In February we were asked to examine cancer risk near Hinkley Point. This first report examines relative mortality risk from female breast cancer ICD9: 174 in wards in Somerset distant up to 25km and more from Hinkley Point.

Our prior hypothesis is that breast cancer risk is highest in wards which are proximal to large drying offshore mudbanks that have become repositories for man-made radioactive isotopes released from Hinkley Point and accumulated over the period of its operation. We also expect *a priori* that the trend with distance will be highest in the coastal wards with large population density but will fall steeply over the first 5km and thereafter flatten out. We further expect that wards in low-lying areas with high density of river valleys will show a higher relative risk than areas of higher ground.

These prior expectations are based on the findings in north Wales and other considerations, which we review in the discussion section

2.

Breast Cancer and Ionizing Radiation

The following review is based on a paper given at the 1st World Conference on Breast Cancer held in Kingston, Ontario in 1997 (Busby, 1997).

The developed world is experiencing a cancer epidemic which began about twenty years ago. One of the most tragic and obvious aspects of this is the case of breast cancer, particularly in young women. In 1997, in the UK, a case of breast cancer was diagnosed every 25 minutes. 1 in 12 or more women now will suffer from the disease. What is the cause of this increase?

Cancer is a genetic disease expressed at the cellular level. It is almost wholly environmental in origin, being caused initially by a genetic mutation in a single cell. Since the time lag between initial mutation and final clinical expression of the disease is about 15 to 20 years and since the disease began to increase in the UK in the period 1975-1985, we are looking for a mutagen or carcinogen which entered the environment in the period 1955-1965. Although there were changes in a number of environmental stresses in this period, there is another clue to the identity of this carcinogen. The incidence is significantly higher in Wales than in England. Wales is the wettest part of the United Kingdom. These two pieces of evidence strongly suggest that the cause of the breast cancer epidemic, and indeed the general cancer epidemic, is exposure to ionizing radiation from global weapons-testing fallout. This mixture of novel man-made radioisotopes fell to earth in the period 1955-1965. The measured concentrations of the main radioactive pollutants, Strontium-90 and Caesium-137 were two to three times higher in Wales than in England. The fallout peaked in 1963 and began to fall following the Atmospheric Test Ban Treaty signed in that year.

Over the period 1960-1994 deaths from breast cancer in Wales and England increased significantly, the pattern of increase with time in women of different age groups (or cohorts) exhibited a shifting peak with their year of birth in mortality ratio. It was possible to show that the women most at risk were those young women who were born between the wars who were the 'nursing mothers' aged 20-30 over the peak period of fallout when the largest amounts of the isotope Strontium-90 had become incorporated into milk (Busby 1995,1997). The cohort of women who were entering puberty at the time also began to show a sharp rise in breast cancer risk by 1995.

The suggestion that breast cancer increases follow low level exposure to radioactive fission products has also been made by others (Gould and Sternglass 1993, Gould ,1997). There are other pointers that support the thesis. First, many studies have linked breast cancer to consumption of dairy products (e.g. Armstrong and Doll, 1975, Phillips, 1975, Talamini 1984). The general increase in saturated fat intake which has been linked with heart disease also just preceded the breast cancer epidemic. But a recent large scale study by Willett showed that dietary fat intake is not correlated. This suggests that a component of milk apart from fat might be linked. Could it be Strontium-90? The rise in consumption of fat after the war was actually a rise in the consumption of dairy products (Marr 1975). Take Japan, which has very low rates of breast cancer. The Japanese diet is very low in dairy products (Tominaga and Kato, 1992, Benfante, 1992). The Japanese do not drink milk; their heart disease rates are also low.

The models which are presently used by the risk agencies like the International Commission on Radiological Protection (ICRP) accept that ionizing radiation is a cause of the disease. Increased rates are seen in the Hiroshima survivors cohort. However, these models assume that exposure to doses at the levels provided by the weapons fallout exposures cannot produce the increases in breast cancer seen. This is the area of dispute briefly reviewed earlier. The difference between the ICRP view and that which holds that exposure-risks of

internal man-made radioisotopes represents a significant cancer hazard essentially arises due to different methods of estimating exposure dose. The averaging methods employed by the early physics-based models which underpin the ICRP risk factors are only applicable to external irradiation, where each cell in the irradiated tissue gets equal chance of being 'hit'. For ingested radioisotopes, particularly those which are in the form of aggregate particles or sequentially decaying isotopes, cells which are close to the atom or particle will get many sequential 'hits' in a short time. A theory has been developed to examine the excess hazard from such processes, the Second Event Theory (Busby 1995, 1998, 2000, Edwards and Cox, 2000). It predicts very large excess risk from certain man-made radioisotopes, notably Strontium-90. It also predicts anomalously high cancer risks from inhalation of micron-sized aggregate particles of alpha-emitters like Plutonium-239 and Americium-241. Because of large amounts of such man-made radioisotopes have been released from nuclear reprocessing plants and nuclear power stations since the 1960s, it is believed likely that these sites will be point sources for breast cancer clusters. Discharge these substances to the sea results in their becoming attached to fine silt particles. These particles are preferentially precipitated in low tidal energy conditions in estuaries or on coastal intertidal banks (Assinder 1994, Baxter, 1989). These banks become repositories of radioactive particles which are re-suspended by wave action and blown ashore. (Eakins, 1987, other refs). The particles have their highest concentration in the 0-1km coastal region. The concentration trend for Plutonium with distance from the coast in Cumbria is shown in Fig 1 (Eakins and Lally, 1984) but the trend generally follows the penetration of sea salt inland and in Somerset the trend would be expected to be of the same type, although the concentrations would be lower. Once suspended and blown ashore, the radioactive particulate material is inhaled and transferred through the lung to the lymphatic system where it may become transferred to any organ. Measurements made on autopsy specimens from all parts of England and Wales showed that Plutonium concentrations were highest in the tracheobronchial lymph nodes. (Popplewell 1985). The mechanism we proposed for the breast cancer increases we found in north Wales near the Irish Sea was that radiation doses from these particles both harmed the immune system and by relocation harmed local cells in the breast and other organs to which they had been relocated by lymphatic circulation.

Although we do not know of any study which has looked at this source of excess risk for breast cancer, the links between leukemia and radioactive particles is supported by a study carried out in 1990 by workers from the Leukemia Research Fund (Alexander *et al*, 1990). These workers studied leukemia risk in estuaries in England and Wales and established that there was a modest and statistically significant excess risk of leukemia in children living in wards which were adjacent to estuaries.

In addition to the discharge to sea to person route hypothesised above there is, in the case of Hinkley, the direct exposure route in those populations living immediately downwind of the aerial discharge stacks. Thus we would predict *a priori* that the inhabitants of Burnham on Sea would be at risk following exposure to aerial emissions of Tritium, Carbon-14, noble reactor gases etc.

3

Method

1991 Census Population data by sex and 5-year age group was purchased from ONS for 103 census wards in Somerset. The area studied extended from Porlock and Exmoor in the West along the coast to Berrow, just south of Weston-super-Mare, and extended to Blackdown in the south-east and Wells in the north-east. We chose to exclude the large town of Weston-

Super-Mare and its immediate environs since its large population would have swamped any of the distance effects we were examining. Using these ward populations, the number of deaths that should be expected from all malignant neoplasms and from female breast cancer were calculated for each ward using the England and Wales national aggregated data published annually by ONS for the period 1995-1998. The observed numbers of cases in each ward over the four years 1995-1998 were then divided by the appropriate expected number of cases to give the value of Relative Risk for the ward. In addition, we obtained details Social Class of households in each ward in order to adjust for this parameter when accounting for variations in risk. The relative risk of breast cancer in each social class was determined by OPCS in 1981 for the years 1970-72. The population weighted mean social class in each ward was calculated and this value was used as a multiplier of risk to establish social class standardised expectation in each ward.

For our main distance analysis we took as our point source the centroid of the offshore mud banks formed by coastal and tidal conditions at the mouth of the River Parrett. The Ordnance Survey Grid reference of this point is ST270460. It is these mud banks that we believe to be the main source of radiation exposure, through sea-to-land transfer of radioactive particles. However, we have also analysed the data using a point source 1.5km east of the Hinkey Point outfall pipe, (ST240460) a location used by MAFF for taking samples of mud for analysis. For each point used as centre we constructed concentric rings at 5km radii up to 25km. Wards which were cut by these rings we partitioned according to the fractions of their area which appeared to be in each 5-km annulus. For example, if 30 percent of the area of a ward is in the 0-5km ring and the remaining 70 percent is in the 5-10km annulus we add 30 percent of the observed and expected numbers for this ward to the aggregate expected and observed numbers in the 5-km ring and the remaining 70 percent to the aggregate numbers in the 5-10 annulus. This assumes a uniform density of population.

Statistical significance of Relative Risk was calculated using Poisson Cumulative Probability for less than 50 cases observed and the Chi-squared statistic if the numbers were higher than 50. Statistical significance of the trend with distance from the source was examined by calculating the significance of the F-statistic for a simple linear least squares regression of Relative Risk on average distance.

4

Results

Relative Risk of breast cancer mortality in wards in Somerset near Hinkley Point is shown in the coloured map Fig 2. The values in individual wards are given in Appendix A which gives the results corrected and uncorrected for social class. Adjustment effects a reduction in the RRs by about 5% and is not considered to be a significant determinant of risk in this study. The Relative Risk in aggregated populations of increasingly large concentric rings centered at 5km intervals on the point source at the centre of the offshore mud bank (see map) is given in Table 1. In Fig 3 we show the relation between relative Risk in these increasingly large areas and the radius of the area. Table 2 we tabulate the results of a simple linear least squares regression of Relative Risk on this radius. Fig 4 shows the values of Relative Risk in each annular 5km ring and which includes as an initial point at 2.5km the risk in the two wards of Burnham on Sea and as a final point the remaining wards in Somerset with a line which models a polynomial regression best fit. Figure 4 is a colour map of the study region which includes an overlay which shows, in green, the main rivers and, in red, the 200m contour line and thus the high land of the Quantock Hills to the south and the Mendip Hills to the north.

Table 3 compares Relative Risk in the low land areas near the rivers with that in the higher land.

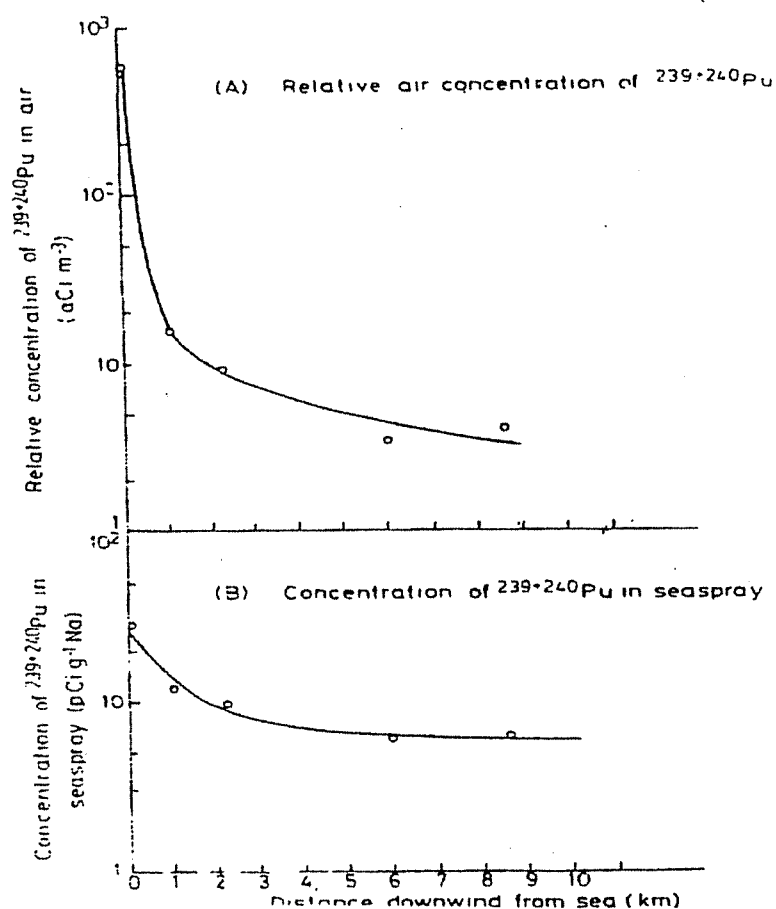


Fig 1. Inland penetration of plutonium particles in seaspray.
(Source: Eakins and Lally, 1984)

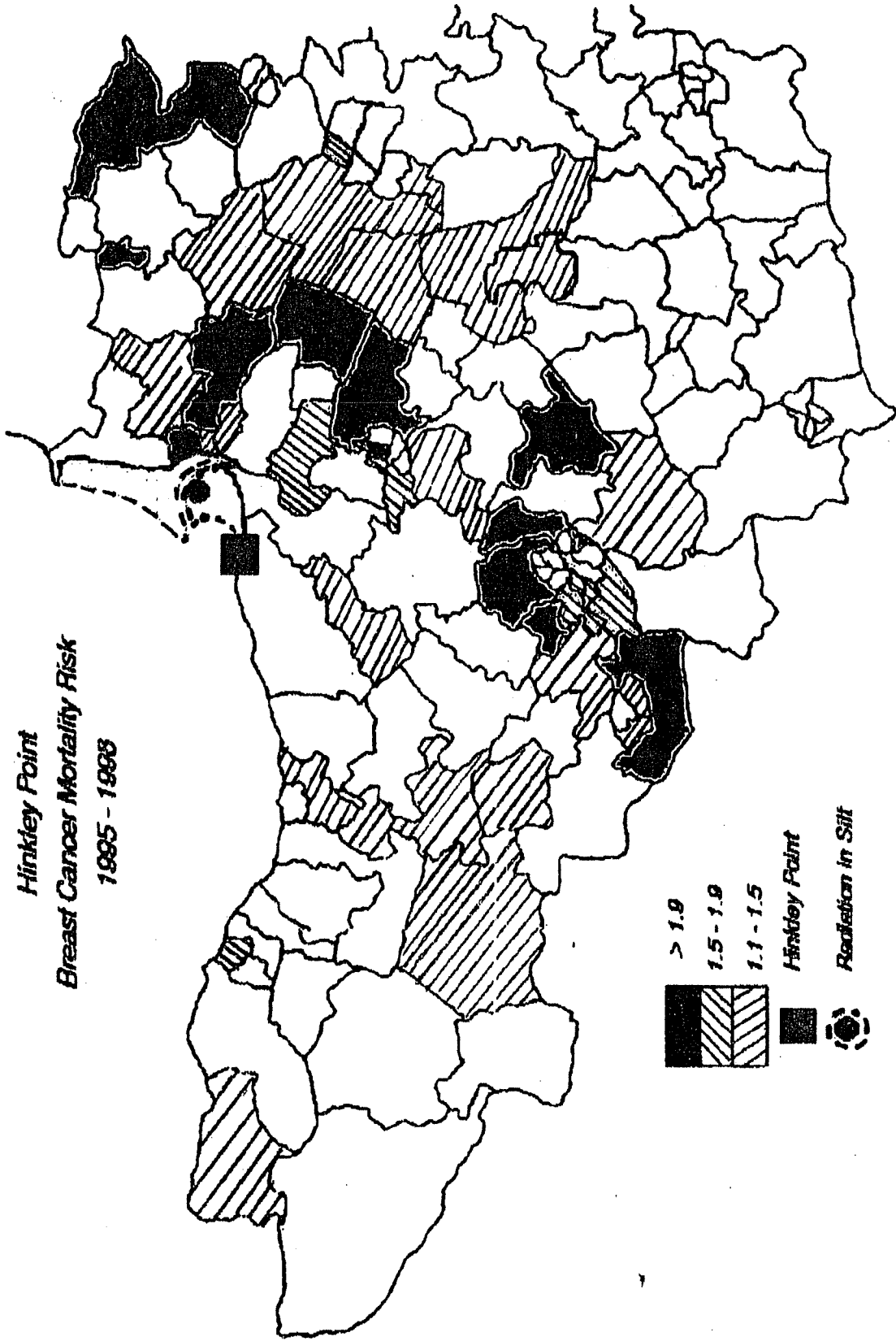
Radius (km)	Observed cases ^a	Expected cases	Relative Risk	χ^2 (p-value) ^b
0-5	30.9	21.6	1.43	4.0 (<.025)
0-10	52.1	39.2	1.33	4.24 (<.025)
0-15	102	82	1.24	4.87 (<.025)
0-20	120.8	103.8	1.16	2.8 (<.05)
0-25	189.2	167.2	1.13	2.9 (<.05)

^aObserved cases may be fractional due to splitting of wards by concentric rings.

^bFor the first of these rings the Poisson p-value was 0.02

Table 1. Relative risk of breast cancer mortality 1995-1998 in ward populations in 5, 10, 15, 20 and 25km radius rings around the centre of the offshore banks near Hinkley Point

*Hinkley Point
Breast Cancer Mortality Risk
1985 - 1998*



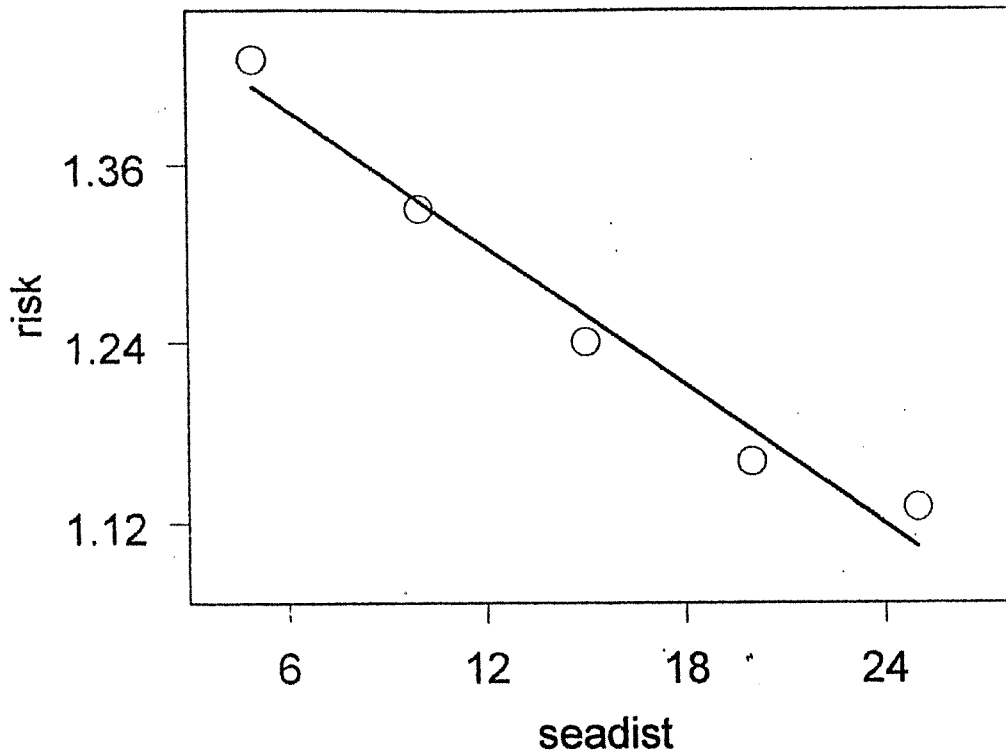


Fig 3. Relationship between Relative Risk of mortality from breast cancer 1995-1998 and distance (km) of cumulated population from the point source of risk in the offshore mud banks

Equation: $relative\ risk \sim seadist + intercept$

Coefficients	Value	Std. Error	t- value	Pr(> t)
Intercept	1.45	0.0222	65.38	0.0000
Seadist	-0.0154	0.0015	-9.97	0.0021

Residual standard error: 0.02443 on 3 degrees of freedom

Multiple R-squared: 0.9707

F-statistic: 99.37 on 1 and 3 degrees of freedom, the p-value is 0.002148

Table 2. Linear least squares regression results of Relative Risk of mortality from breast cancer 1995-98 in cumulated populations in increasing rings around the point source in the offshore mud banks near Hinkley point.

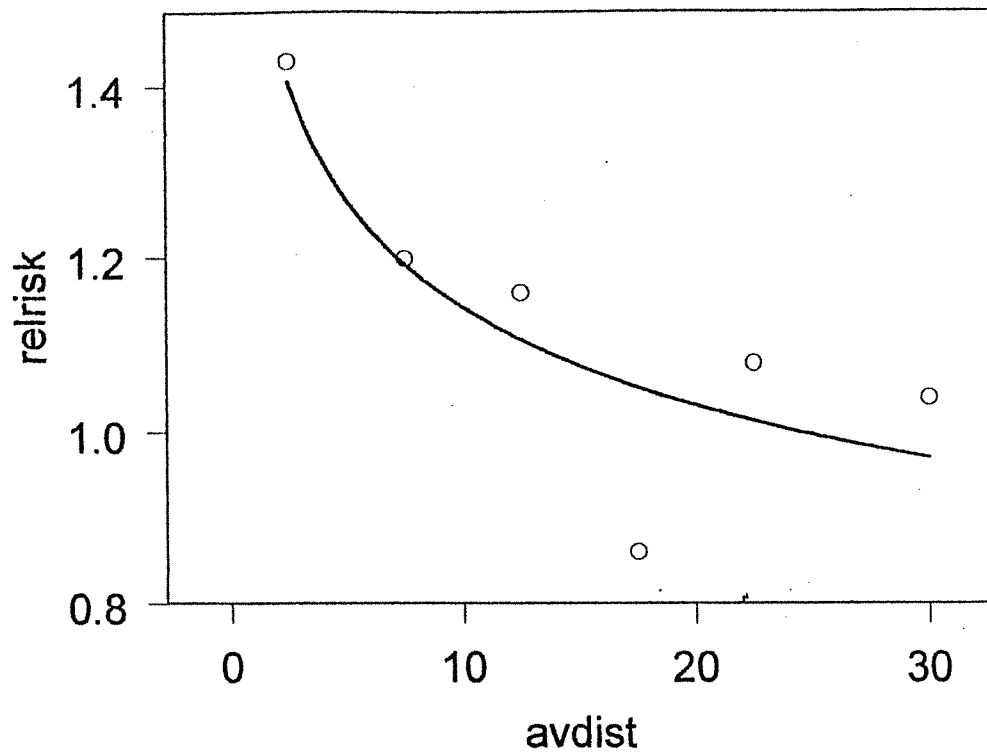


Fig 4. Relationship between Relative Risk of mortality from breast cancer 1995-1998 and mean distance (km) of populations in 5km annular rings with increasing radial distance from the point source of risk in the offshore mud banks. Line represents best power fit to points.

	Observed (deaths)	Expected (deaths)
Low land	299	256
High land	40	56
Both	339	312

Relative Risk 1.64
Chi square = 11.86
p-value <0.01

Table 3. Risk of breast cancer mortality in wards below and above the 200m contour in the whole study area (uncorrected for social class).

The hypothesis that risk is highest inside the 5km ring and falls off significantly with distance is supported by the results. The proximal effect is driven by high Relative Risk in Burnham North where 17 deaths were observed in the four year period where 8.7 were expected (RR = 1.95; $p = 0.007$). In addition, the risk map Fig.2 appears to show a distinct annular region of higher risk to the east of the offshore mud banks but also following the low-lying land and the river which drain it. Shifting the origin of the circles of risk to Hinkley Point itself markedly reduced the Relative Risk in the 0-5km circle but merely moved the highest risk to the 10km circle, falling thereafter in the same pattern. This procedure produced a pattern of risk similar to that found by Bowie and Ewings for leukemia in 1989. Adjustment for Social Class did not affect the statistical significance of the regression trend line, merely reducing the value of the Relative Risks by about 5 percent. In Burnham North this gave the cluster there a social class adjusted RR of 1.84; $p = 0.01$. Coastal wards to the south and east of the mud banks do not appear to carry a high risk. This may be explained by examination of aerial LANDSAT photographs and also closer examination of the position of the centres of population in these two wards, Cannington and Combwich and Quantock Vale. Areas of the coast near the mud banks are very under populated. In Cannington and Combwich, the main centres of population are the two villages themselves which are more than 5km from the point source. The largest village, Cannington, is sheltered from the effects of sea-to-land transfer by its position in the lee of a hilly spur. Quantock Vale is mostly comprised of higher land. In addition to the above, examination of the trend with distance in consecutive annular rings shows a pattern which supports the exponential fall off of concentration shown in the levels of plutonium in air shown in Figure 1.

That the risk seems associated with low land and offshore silt or sand banks is supported by the observation along the coast to the west. The rocky cliffs near Watchet carry low risk whilst the river valley of the ward of Williton carries higher. Most interesting is Minehead, the only other patch of coastal offshore sand in the study area. Here the ward of Minehead North, with the sandy beaches carries high risk RR = 1.75; $p = 0.06$ with 10 observed and 5.7 expected but Minehead South, away from the sand has RR = 0.67 with 4 observed, 6 expected. Adjacent to these two is Alcombe, half of which is coastal and half inland and which carries almost exactly intermediate risk at RR = 1.32 having 6 observed deaths and 4.52 expected.

The hypothesis was based on theoretical considerations of our findings on the north Wales coast. The towns of Bangor and Conwy are both on estuaries (if we consider the Menai Strait to be an estuary), close to an extensive mud bank, the Lavan Sands, which contains considerable quantities of radioactive silt. In our unpublished study we found that in the six years 1984-89, relative risk of incidence of breast cancer in all ages was 1.8 for Bangor (53 observed) and 2.1 for Conwy (86 observed). Concentration of Caesium-137 in the intertidal sediment varied with where the sample was taken but close to the respective towns values were about 300Bq/kg dry in 1989. (Garland *et al.* 1989). This level of Caesium-137 was associated with plutonium-239+240 levels of about 60Bq/kg. The origin of this material was mainly Sellafield but in the river material from Chernobyl contributed about half the radioactivity. (Assinder *et al.*, 1994). These two towns are on the north coast and are sheltered from all winds west of north, and so sea to land transfer of radioactivity from the silt (which has been measured) is less than it might be were the towns facing the prevailing weather. The drying area of the offshore banks near Conwy and Bangor is about 50km².

The offshore drying banks near Hinkley Point are roughly the same size forming a triangular area of 58km² stretching from the power station in the south to Brean Down in the north. The main population centre close to the banks is the town of Burnham on Sea but unlike the towns of Bangor and Conwy, Burnham faces the prevailing wind and is directly downwind of the power station. The banks themselves seem to have lower levels of man-made radioactivity in them. MAFF has measured levels of Caesium-137 in the sediment a kilometre east and west of the outfall pipe from the station. Representative values are given in Table 4 below.

Year	^a Cs-137 Hinkley mud. (Bq/kg)	Cs-137 Cemlyn Bay mud (Bq/kg)	Pu-239 Cemlyn Bay Mud (Bq/kg)
1970	375	207	Not listed
1975	250	1150	Not listed
1980	42	1000	56
1985	16	700	58
1990	44	320	48
1995	35	180	23

^a corrected for measurements made on wet mud

Table 4 Values of Caesium-137 and Plutonium-239 activity in intertidal mud from north Wales and Hinkley Point

It is clear that levels on the Somerset offshore banks are between a quarter and a tenth of those in north Wales, where the effects of Sellafield are predominant. Nevertheless, this lower level of radioactive contamination is more than compensated by the openness of the coast and hinterland to the prevailing wind. The sea is always brown in onshore winds, and seaspray, carrying its radioactive burden, will penetrate far inland. It will be deposited inside the hollow area defined by the Quantock and Mendip Hills and be washed on to the Somerset Levels, where its drainage through the rivers and dykes back to the sea will result in transfer back to the depot of the offshore banks. This cyclical process will retain the radioactive particles in the area and increase the chance of inhalation and ingestion. Examination of the topological and river schematic shown in Figure 5 reveals that those areas to the east of the rivers are the areas that carry the highest risk. Comparison of two groups of wards categories by whether they are above or below the 200m contour shows that the aggregate of wards on the low ground carries 1.64 times the risk of the high-ground wards ($\chi^2 = 11.8$; $p < 0.05$).

The results of this examination of breast cancer mortality risk demonstrate that proximity to the offshore drying banks close to Hinkley point power station may be seen to be the main source of risk. It is not being maintained that discharges from the nuclear power station are the only source of radioactivity in the mud. There will be a proportion of material from weapons fallout and also from man-made isotopes in the Uranium and Thorium series. The relative cancer hazard from specific internal isotopes has not been established, and no attempt will be made in this report to review the evidence that man-made isotopes are more hazardous than natural isotopes (see e.g. Busby, 1995).

The results of an analysis mortality from of all malignancies, and other specific cancer sites in the area near Hinkley Point will be reported separately.

Conclusions

This first report of the results of a study of mortality in wards near Hinkley Point between 1995 and 1998 reveals a pattern of risk in breast cancer that is similar to that found for leukemia in young people living in the same area in 1989 (Bowie and Ewings, 1989). Results also support earlier findings in of our group in Welsh data of an association of elevated breast cancer risk with proximity to offshore, drying mud-banks containing radioactive contamination originating with discharges from nuclear plant and other sources. In the Somerset study area Relative Risk was highest in the ward adjacent to the mud-banks and downwind from Hinkley point, namely Burnham North (RR = 1.95) 17 observed, 8.7 expected). Risk within the five kilometre radius of the centroid of the mud flats was 1.43 and this risks fell continuously as larger radius rings of population were analysed. ($p = .002$) The mean trend with distance from the flats in five consecutive rings showed a similar exponential decay pattern to that shown by the penetration of radioactivity inland following sea-to-land transfer via seaspray. In the whole of the study area, risk higher risk was associated with living on low lying land near rivers compared with higher land above 200m (RR=1.64 $p < .05$). None of the results could be explained by socioeconomic variables which contributed only about 5 percent of the risk.

It is concluded that the most likely explanation for the finding is that the cancer risk follows exposure to inhaled radioactive particles, originating mainly from the nuclear site, resuspended by wave action and driven ashore by the prevailing wind. In the case of the most local downwind wards, there may also be a contribution from exposure to aerial discharges from the power station. This study is an ecological study and can only show association, not causality. Although we believe that the results support the hypothesis that the radioactive discharges from Hinkley Point may have contributed to the risk of breast cancer, it is possible that some other explanation which we are unaware of may be found for the results we report. Further work is in progress to investigate the hypothesis in both breast cancer mortality and mortality from other cancers in the area.

Recommendations

This research was made possible by the recent release of small area cancer mortality data by the Office of National Statistics (ONS). Before this it was impossible to obtain cancer data for small areas either from ONS or from the Regional Cancer Registries. The argument given by these registries continues to be that the data are confidential, because their release might make those who provided them feel that they were being in some way identified. We do not accept this argument and have found that those who suffer cancer, and their friends and family, are most interested any information that might throw light on the cause of their condition. We believe that the true origin of the secrecy over small area health data is political. In a world that is increasingly filling up with toxic chemicals and radioactive isotopes released from point sources, and one in which the illness rates are increasing, particularly from cancer, the only sensible course is to allow access to incidence data so that risk can be mapped and causes examined.

Accordingly, we recommend the release of small area cancer incidence and mortality data for all years since 1974.

Second, since the results of the present study support many other studies which show that the cancer hazards of internal man-made radioactivity are hundreds of times higher than the presently accepted risk models, it is recommended that no further release to the

environment of such materials is permitted, pending research which must show these substances to be harmless.

8

Acknowledgements

This study was supported by 'Stop Hinkley' , 'West Somerset CND' and 'The Low level Radiation Campaign'.

Summary

This study of breast cancer mortality is the first in a short series which uses national data to examine the relative risk of dying of cancer in 103 wards within 30km of Hinkley Point nuclear power station between 1995 and 1998. It begins by arguing that the main source of radioactive exposure of populations living in the area is radioactive material discharged from the nuclear power station and trapped in the intertidal sediment which forms the extensive offshore mud banks which characterise the coast from Hinkley Point to Brean Down. These banks, which extend to over 50 square kilometres in area have become a depot for materials discharged from the power station since it was commissioned. It is argued that particles of intertidal sediment containing man-made radioisotopes are re-suspended by wave action and transferred to land where they are inhaled by those living close to the sea. This leads to increases in cancer in such populations. The hypothesis being tested is that the centre of the offshore mud banks is a point source of risk. The mechanism underlying the hypothesis follows recent analysis of cancer incidence data for coastal and inland populations in Wales, which showed that the population of certain towns in north Wales close to offshore mud banks had elevated risk of cancer including breast cancer.

Results of the present study support the hypothesis and show that there was a statistically significant excess risk of dying of breast cancer in the aggregate wards within 5km of the centre of the offshore mud banks near Hinkley Point (RR= 1.43; $p = .02$). The risk falls off with increasing distance from this point source and in wards contained within 5, 10, 15, 20 and 25km the Relative Risk (based on England and Wales national rates) were 1.43, 1.33, 1.24, 1.16 and 1.13 with overall RR for the study area 1.09. The most significant high risk ward in the study area was Burnham North, which was also the closest to the mud banks and is also the ward directly downwind of the nuclear power station. Here Relative Risk was about twice the expected value (8.7 expected and 17 observed, RR = 1.95; $p = 0.02$). Social class was shown to affect the overall result by less than 6 per cent. The trend with distance from the centre of the mud banks in consecutive 5km annular rings was similar to published trend data for inland penetration of plutonium and seaspray.

The inland penetration of airborne man-made radioactive particulates is discussed and it is suggested that apart from increasing risk in coastal towns near intertidal mud or silt deposits, this effect might also result in increased risk in low-lying areas and river valleys. Comparison of the populations living in wards below the 200m contour with those above gives a relative risk of 1.64 ($p < .02$) between the two groups.

This result for breast cancer identifies a similar high risk area to that reported by Bowie and Ewings in a 1989 Somerset Health Authority study of leukemia in young people living in near Hinkley Point.

The present study was made possible by the release, for the first time, of limited ward level data on mortality by cause of death. It is recommended that such data is released to wards level for earlier years and expanded to include other causes of death and also deaths in young persons. It is also recommended that cancer incidence data for small areas be made available so that further and more powerful statistical methods can be used to examine the effects of point source pollution from nuclear sites. Since this result adds to the increasing evidence that exposure to low levels of internal man-made radioactive isotopes carries anomalously high risk of cancer it is recommended that no more releases of such substances be permitted, at least until adequate research into their real health effect is carried out.

This research was supported by 'Stop Hinkley' and by the 'Low Level Radiation Campaign'

References

- Alexander, F.E, Cartwright, R.A, McKinney, P.A and Ricketts, T.J, (1990) 'Leukemia incidence, Social Class and Estuaries: an Ecological Analysis' *Journal of Public Health Medicine* 12(2)109-117
- Andersen H, Moeller T, (1997) 'Cancerinsidens omkring Barsebaecks Kaernkraftwerk' Lund: Regionala Tumorerregistret Universitetssjukhuset.
- Armstrong R and Doll R (1975), 'Environmental Factors and Cancer Incidence and Mortality in Different Countries with Special Reference to Dietary Practices.' *International Journal of Cancer* 15:631-717
- Assinder, D. J., Robinson, C. D., Halsall, J., and Telford, A. (1994), 'The distribution and behaviour of artificial radionuclides in sediments of the North Wales coast', *Journal of Radioanalytical and Nuclear Chemistry*, 182 (2), 225-235.
- Baxter, M. S. (1989), *An Assessment of Artificial Radionuclide Transfer from Sellafield to South West Scotland*, DoE report No PECD 7/9/343, (Glasgow, East Kilbride: SURRC).
- BEIR, (1990), *The Health Effects of Exposure to Low Levels of Ionizing Radiation-BEIR V*, Washington: National Academy Press
- Benfante R (1992) Studies in cardiovascular disease and cause specific trends in Japanese Americal men living in Hawaii and risk factor comparisons wiuth other Japanese populations in the Pacific Region.' *Human Biology* 64: 791-805
- Bowie C and Ewings PD, (1988) *Leukemia incidence in Somerset with particular reference to Hinkley Point* Taunton: Somerset Health Authority
- Busby C.,(2000), 'Reponse to Commentary on the Second Event Theory by Busby'. *International Journal of Radiation Biology* 76 (1) 123-125
- Busby C.C, (2000a) *Radiation from Sellafield and Cancer near the Irish Sea. The Second Annual progress report from the Irish Sea Group in support of the litigation Short and Others vs BNFL and Others.* Unpublished report.
- Busby, C. C. (1995), *Wings of Death: Nuclear Pollution and Human Health* (Aberystwyth: Green Audit
- Busby, C. C. (1997), 'Breast cancer in England and Wales and Strontium-90 in atmospheric weapons fallout', *Proceedings of the World Conference on Breast Cancer held at Kingston, Ontario* (New York: WEDO).
- Busby, C. C., (1998), 'Averaging Errors in the perception of Health Risks from Internal radioisotopes with specific emphasis on mutagenic enhancement due to 2nd Event effects from sequentially decaying man-made fission-product beta emitters', *Proceedings of the European Parliament STOA workshop, February 1998.* (Aberystwyth: Green Audit)
- Busby CC and Scott Cato MS (1997) ' Death rates from leukemia are higher than expected in areas around nuclear sites in Berkshire and South Oxfordshire.' *British Medical Journal* 315:309
- Cook-Mozzafari P.J, Darby, SC. Doll R, Forman D, Hermon C, Pike MC, Vincent T (1989) Geographical variation in mortality from leukemia and other cancers in Englands and Wales in relation to proximity to nuclear installations 1969-78' *Br.J.Cancer* 59: 476-85
- Eakins, J.D and Lally, A.E., (1984), 'The transfer to land of actinide bearing sediments from the Irish Sea by spray.' *Science of the Total Environment* 35 23-32

- Edwards, AA and Cox R (2000), 'Commentary on the Second Event theory of Busby' *International Journal of Radiation Biology* 76 (1) 119-122
- Gould, J. M., (1997), *The Enemy Within* (New York: Four Walls Eight Windows).
- Hoffmann W., Greser E. (1998), 'Epidemiologic evaluation of leukemia incidence in children and adults in the vicinity of the nuclear power plant Kruemmel (KKK)' in Schmitz-Feuerhake I and Schmidt M, *Radiation Exposures by Nuclear Facilities, Proceedings of an International Workshop, Gesellschaft fuer Strahlenschutz, Portsmouth, England 1996* (Bremen: Gesellschaft fuer Strahlenschutz)
- Marr JW, (1973) 'Some trends in food consumption in Great Britain 1955-71.' *Health Trends* 5: 37-9
- Nussbaum, R. and Koehnlein, W. (1994), 'Inconsistencies and open questions regarding low-dose health effects of ionizing radiation', *Environmental Health Perspectives*, 102(8), 656.
- Phillips RL, (1975) 'The role of lifestyle and dietary habits in risk of cancer among Seventh Day Adventists' *Cancer Research*, 35:3513-22
- Popplewell, D.S, Ham G.J, Johnson, T.E and Barry, S.F (1985) 'Plutonium in autopsy tissues in Great Britain' *Health Physics* 49:304
- Sternglass EJ, and Gould JM (1993), 'Breast Cancer: Evidence for a relation with fission-products in the diet.' *International Journal of Health Services* 23/4:783-804
- Talamini R *et al.* (1984) 'Social factors, diet and breast cancer in a northern Italian population.' *Brit. J. Cancer* 49: 723-9
- Tominaga S and Kato I, (1992) 'Diet, nutrition and cancer in Japan' *Nutrition and Health* 8: 125-132
- Willett WC (1992) 'Dietary fat and fibre in relation to Breast Cancer' *Journal of the American Medical Association* 268: 2037-44

	socialH	breast	corr	uncorr	corr	Poisson
class	expect	observe	corPexp4	RR	corrPrr4	significant
Cannington + Combwich	1.058	3.0332	1	3.26069	0.329685	0.306684
Central	1.06	5.4864	3	5.815584	0.546807	0.515855
Dowsborough	1.06	2.2052	3	2.359564	1.360421	1.271421
East Poldens	1.1	1.7664	2	1.94304	1.132246	1.029315
Eastern Quantocks	1.06	1.582	1	1.72438	0.632111	0.579919
Eastover	1.03	2.8652	6	2.979808	2.094095	2.013553
Hamp	1.01	4.1284	6	4.169684	1.453348	1.438958
Huntspill	1.06	5.97	3	6.2088	0.502513	0.483185
Newton Green	1.04	1.2588	0	1.296564	0	0
North Petherton	1.03	3.7404	5	3.852612	1.336755	1.297821
Parchey	1.02	1.1984	3	1.234352	2.503338	2.430425
Pawlett + Puriton	1.08	2.5044	4	2.704752	1.597189	1.478879
Quantock	1.05	5.92	10	6.1568	1.689189	1.62422
Sandford	1.1	2.0284	2	2.23124	0.985999	0.896363
Sowey	0.99	0.996	0	0.97608	0	0
Sydenham	1.05	5.6584	3	5.997904	0.530185	0.500175
Victoria	1	3.8344	3	3.8344	0.782391	0.782391
West Poldens	1.08	2.3696	6	2.559168	2.532073	2.344512
Westonzoyland	1.05	1.334	1	1.4007	0.749625	0.713929
Woolavington	1.08	1.9692	2	2.126736	1.015641	0.940408
Alcombe	1.09	4.53	6	4.8924	1.324503	1.226392
Aville Vale	1.02	0.9372	0	0.918456	0	0
Carhampton + Withycombe	1.04	1.4152	1	1.507188	0.706614	0.663487
Crowcombe + Stogumber	1.06	1.3928	1	1.476368	0.717978	0.677338
Dunster	1.09	1.1244	1	1.225596	0.889363	0.81593
East Brendon	1.1	0.6816	1	0.742944	1.467136	1.345996
Holnicote	1.08	0.8176	0	0.883008	0	0
Minehead North	1.02	5.7044	10	5.98962	1.753033	1.669555
Minehead South	1.07	6.0576	4	6.481632	0.660328	0.617129
Old Cleeve	1.06	2.4792	0	2.578368	0	0
Porlock + Oare	1.05	2.4124	3	2.53302	1.243575	1.184357
Quantock Vale	1.07	2.022	1	2.16354	0.49456	0.462205
Watchet	0.99	3.2696	0	3.171512	0	0
West Quantock	1.03	1.5888	1	1.604688	0.629406	0.623174
Williton	1.04	3.0956	4	3.281336	1.292157	1.219016
Burrow Hill	0.98	1.9084	0	1.889316	0	0
Curry Rivel	1.07	3.5528	2	3.801496	0.562936	0.526109
Islemoor	1.03	1.5376	1	1.61448	0.650364	0.619394
Langport + Huish	1.05	3.4132	4	3.549728	1.171921	1.126847
Martock	1.07	4.9928	6	5.342296	1.20173	1.123113
Turn Hill	1	2.1632	3	2.119936	1.386834	1.415137
Wessex	0.98	5.4024	2	5.348376	0.370206	0.373945
Blackdown	1.05	1.8156	1	1.888224	0.550782	0.529598
Neroche	1.04	2.3756	3	2.49438	1.262839	1.202704
Dulverton + Brushford	1.02	2.6004	2	2.73042	0.769112	0.732488
Exmoor	1.07	0.7364	0	0.795312	0	0
Haddon	1.01	0.83	1	0.8466	1.204819	1.181195
Quarme	1.03	0.892	1	0.90984	1.121076	1.099094
Bishop's Hull	1.08	4.5904	7	4.957632	1.524922	1.411964
Bishop's Lydeard	1.09	3.1652	3	3.450068	0.947807	0.869548
Bradford-on-Tone	1	1.7096	2	1.7096	1.169864	1.169864

0.05

Comeytrove	1.08	5.4756	6	5.858892	1.09577	1.024084	
Milverton	1.03	1.794	2	1.84782	1.114827	1.082357	
Monument	1.08	2.1576	7	2.287056	3.244346	3.060703	0.01
Neroche	1.08	2.3756	3	2.589404	1.262839	1.158568	
Blackdown	1.06	1.8156	1	1.942692	0.550782	0.51475	
North Curry	1	1.7484	4	1.765884	2.287806	2.265154	
North Deane	1.1	1.3112	1	1.44232	0.76266	0.693327	
Norton Fitzwarren	1	1.5404	3	1.5404	1.947546	1.947546	
Ruishton + Creech	1.06	4.2112	3	4.548096	0.712386	0.659617	
Staplegrove	1.05	2.6708	6	2.80434	2.246518	2.139541	
Stock St. Gregory	1.09	1.256	1	1.36904	0.796178	0.730439	
Taunton Fairwater	1.07	6.0536	8	6.477352	1.321528	1.235073	
Taunton Halcon	1.02	4.6668	4	4.713468	0.857118	0.848632	
Taunton Holway	1.02	3.5356	7	3.641668	1.979862	1.922196	
Taunton Lyngford	1.06	5.2548	4	5.622636	0.761209	0.71141	
Taunton Manor	1.06	3.2456	5	3.472792	1.540547	1.439764	
Taunton Priory + Wilton	1.02	6.5052	9	6.5052	1.383509	1.383509	
Taunton Pyrland	1.04	2.9548	3	3.10254	1.015297	0.96695	
Taunton Rowbarton	1.06	3.9204	4	4.194828	1.020304	0.953555	
Taunton Trinity	1.08	5.5136	3	5.954688	0.544109	0.503805	
Trull	1.09	2.1316	4	2.34476	1.876525	1.705932	
Wellington North	1.03	4.9048	5	5.051944	1.01941	0.989718	
Wellington Rockwell Green	1.02	1.4548	2	1.542088	1.374759	1.296943	
Wellington South	1.06	6.326	8	6.6423	1.264622	1.204402	
West Deane	1.09	1.0768	1	1.173712	0.928678	0.851998	
West Monkton	1.07	2.3084	4	2.42382	1.732802	1.650288	
Wiveliscombe	1.06	2.7408	1	2.87784	0.364857	0.347483	
Axbridge	1.04	1.5348	3	1.580844	1.954652	1.89772	
Axe Vale	1.04	2.3052	1	2.374356	0.433802	0.421167	
Berrow	1.09	3.2512	3	3.543808	0.922736	0.846547	
Brent	1.08	2.2472	3	2.449448	1.334995	1.224766	
Burnham North	1.06	8.7164	17	9.326548	1.950346	1.822754	0.01
Burnham South	1.05	8.0944	9	8.418176	1.11188	1.069115	
Cheddar	1.08	5.1456	3	5.557248	0.583022	0.539836	
Highbridge	1.06	5.97	7	6.3879	1.172529	1.095822	
Mark	1.07	1.8212	4	1.985108	2.196354	2.015004	
Shipham	1.11	1.23	0	1.3653	0	0	
Wedmore	1.09	3.1608	4	3.47688	1.265502	1.150457	
Avalon	1.1	2.3772	2	2.61492	0.841326	0.764842	
Ebbor	1.06	1.4632	6	1.550992	4.100601	3.868492	0.006
Glastonbury St. Benedict's	1.03	1.8356	1	1.92738	0.544781	0.518839	
Glastonbury St. Edmund's	1.02	1.4012	0	1.373176	0	0	
Glastonbury St. John's	1.07	1.7472	3	1.869504	1.717033	1.604704	
Glastonbury St. Mary's	1.05	2.5088	2	2.584064	0.797194	0.773975	
Moor	1.06	1.8904	2	1.98492	1.057977	1.007597	
Rodney	1.11	1.9424	1	2.156064	0.514827	0.463808	
Sheppey	1.09	2.4292	2	2.647828	0.823316	0.755336	
Street North	1.05	4.6988	5	4.886752	1.064101	1.023174	
Street South	1.06	4.9448	7	5.241488	1.415629	1.335499	
Wells Central	1.1	3.1044	3	3.41484	0.96637	0.878518	
Wells St. Cuthbert's	1.06	5.0744	4	5.378864	0.788271	0.743651	
Wells St. Thomas	1.07	4.8888	3	5.279904	0.613648	0.568192	
Total		311.79	339	328.8	1.09	1.03	